



GMT MONTHLY MEMBERSHIP PROGRESS REPORT

Results as of: 5/31/2018

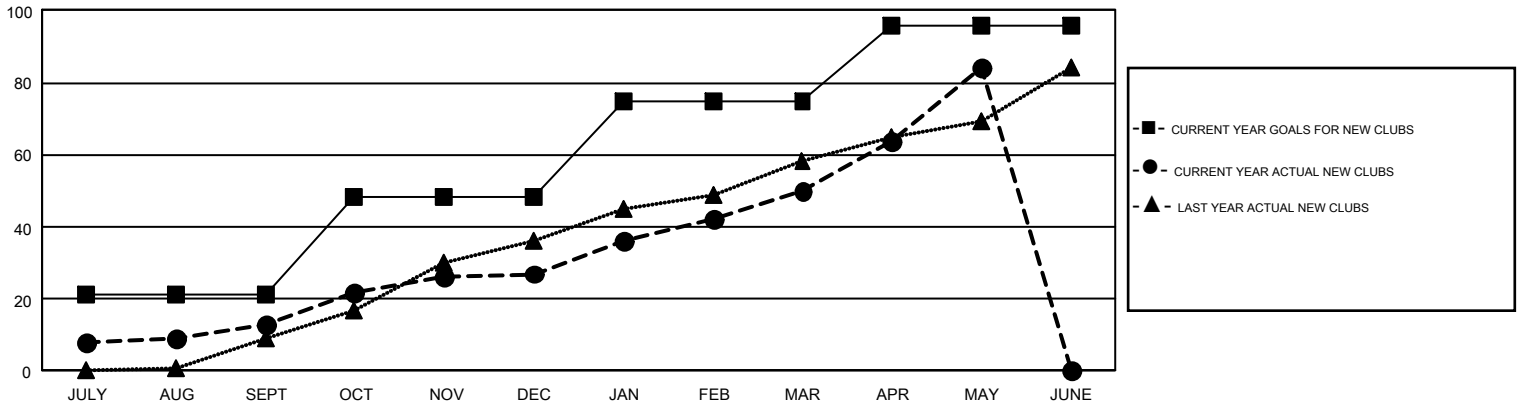
GAT Constitutional Area 6-Africa

REPORT DOES NOT INCLUDE CLUBS IN UNDISTRICTED AREAS.

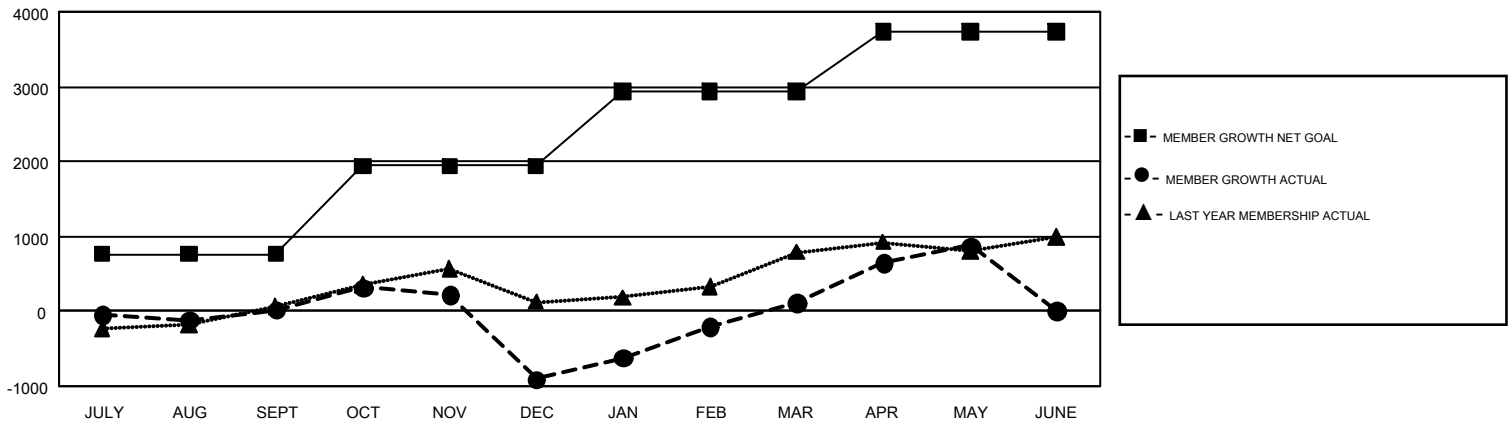
Clubs			
RESULTS FOR 2017-2018			
QUARTER	NEW CLUB GOAL	NEW CLUBS	DROPPED CLUBS
JULY/AUG/SEPT	21	13	16
OCT/NOV/DEC	27	14	47
JAN/FEB/MAR	27	23	11
APR/MAY/JUNE	21	34	1

Members			
RESULTS FOR 2017-2018			
QUARTER	MEMBER GROWTH NET GOAL	MEMBER GROWTH ACTUAL	DROPPED MEMBERS ACTUAL (including transfers)
JULY/AUG/SEPT	760	1,326	1,125
OCT/NOV/DEC	1,179	1,459	2,283
JAN/FEB/MAR	999	2,038	833
APR/MAY/JUNE	797	1,819	891

GOALS AND ACTUAL NEW CLUBS CUMULATIVE



GOALS AND ACTUAL MEMBERS CUMULATIVE



DROPPED CLUBS: 75	854 CLUBS OF 1,392 ADDED 1 OR MORE NEW MEMBERS	GENDER DISTRIBUTION MALE 19,347 (61.78%) FEMALE 11,971 (38.22%)
DROPPED MEMBERS DECEASED 131 CLUB CANCELLED 1,203 OTHER 3,792 TOTAL 5,126	CLICK HERE FOR CUMULATIVE MEMBERSHIP DATA	TOTAL FAMILY UNIT MEMBERS 3,939 FAMILY MEMBERS PAYING HALF DUES 2,160